

Stonebridge Road, Canterbury, CT2 7LN

£1,300 Per Month

Sally Hatcher  
*estates*



## Stonebridge Road

### Canterbury CT2 7LN

Nestled on Stonebridge Road in the historic city of Canterbury, this modern ground floor apartment offers a delightful blend of comfort and convenience.

The apartment features two well-proportioned bedrooms, each designed to create a peaceful retreat. With two bathrooms, including an en-suite, the layout is ideal for both families and professionals seeking a harmonious living environment. The spacious open plan kitchen/ reception room serves as the heart of the home, perfect for hosting guests or enjoying quiet evenings in.

This property comes unfurnished, allowing you the freedom to personalise your living space to reflect your own style. The integrated appliances in the kitchen add a touch of modern convenience, making meal preparation a breeze.

Additionally, the apartment includes one allocated parking space, a valuable asset in this vibrant city. The location is superb, with easy access to local amenities, shops, and transport links, ensuring that everything you need is within reach.

In summary, this charming two-bedroom apartment on Stonebridge Road is an excellent opportunity for those looking to enjoy contemporary living in a historic setting.

Available May 2026

Unfurnished

Council Tax D - Canterbury City Council

Rent £1300

Deposit is equal to 5 weeks rent £1500

Please refer to the fee's tab on our website ([www.sallyhatcher.co.uk](http://www.sallyhatcher.co.uk)) for all information on fee's and deposit options





**Entrance/ Hallway**

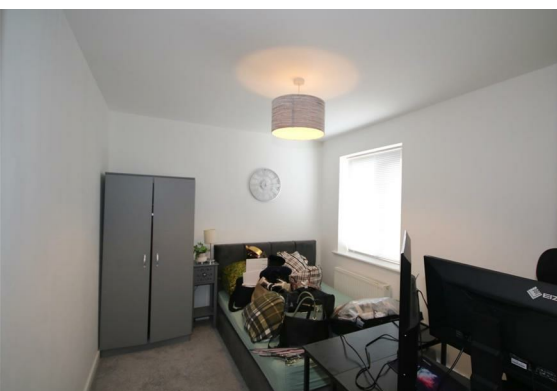
**Open Plan: Living/Kitchen/Diner**  
18'0" x 16'9" (5.507 x 5.124)

**Bedroom 1**  
10'3" x 10'0" (3.133 x 3.052)

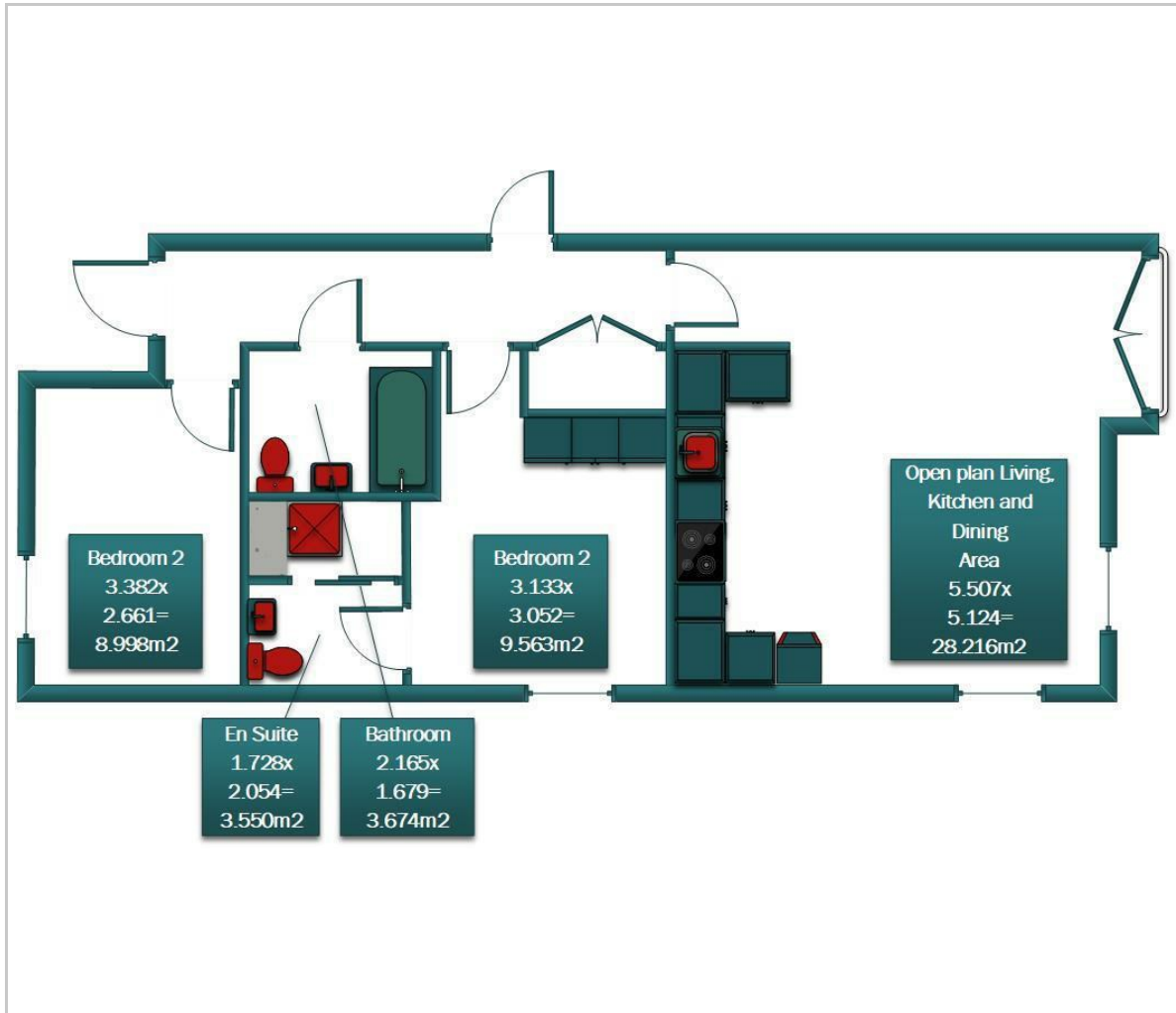
**Ensuite**  
5'8" x 6'8" (1.728 x 2.054)

**Bathroom**  
7'1" x 5'6" (2.165 x 1.679)

**Bedroom 2**  
11'1" x 8'8" (3.382 x 2.661)



## Floor Plan

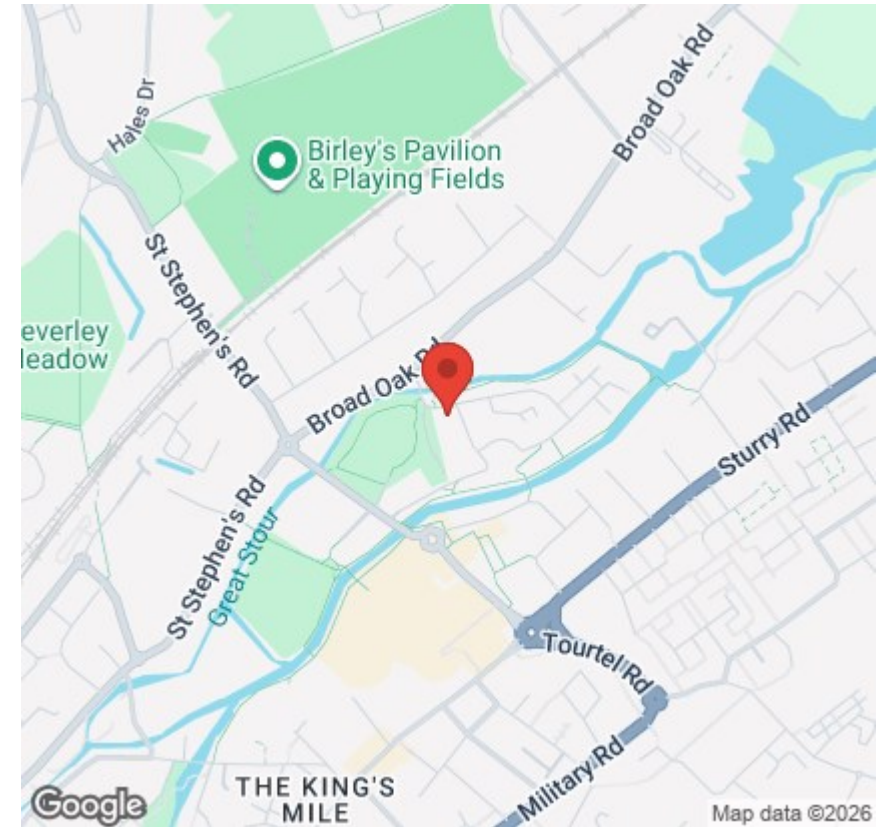


## Viewing

Please contact us on 01227 733888 if you wish to arrange a viewing appointment for this property or require further information.

These particulars, whilst believed to be accurate are set out as a general outline only for guidance and do not constitute any part of an offer or contract. Intending purchasers should not rely on them as statements of representation of fact, but must satisfy themselves by inspection or otherwise as to their accuracy. No person in this firm's employment has the authority to make or give any representation or warranty in respect of the property.

## Area Map



## Energy Efficiency Graph

